



# MULTI-PURPOSE POWDER FILLER

## Fine Powder Crack Filler for Internal Repairs in Plaster, Stone, Brick & Wood

### Technical Data Sheet



### DECORATORS RANGE

#### Description:

*A specially formulated fine powder filler for repairing internal plaster, plasterboard, wood, brick, stone and most other common building materials.*

#### Features & Benefits:

- ♦ Fills cracks and holes.
- ♦ Crack and shrink resistant.
- ♦ Excellent grip properties.
- ♦ Overpaintable.
- ♦ Can be drilled, screwed and nailed once dry.
- ♦ Extra smooth finish.
- ♦ Non-slumping.
- ♦ For interior use.

#### Uses

Bond It MULTI-PURPOSE POWDER FILLER is perfect for preparing surfaces prior to painting and wallpapering as it provides a smooth surface once dried. Non shrinking making it ideal for filling cracks and holes in walls, ceilings and around door frames or skirting boards. Has excellent adhesion properties which stops the filler from slumping. Can be sanded once dry to give a smooth surface area which will hold nails and screws once fully cured. Suitable for interior use only.

#### Preparation

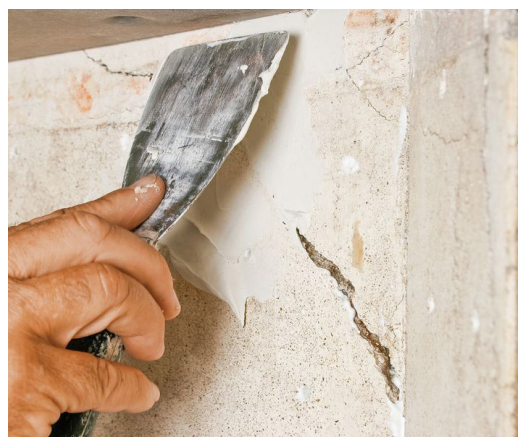
MULTI-PURPOSE POWDER FILLER is easy to mix and apply. For best results brush out any loose material and dust from the area to be filled or repaired. Hairline cracks should be slightly enlarged to provide adequate depth for filler penetration. Moisten absorbent surfaces with water. Touch in nail and screw heads with an oil-based paint to prevent rusting.

#### Mixing

Only mix enough filler that can be used within a 40 minute period. Add approximately 2.5 parts filler to 1 part cold clean water and mix to a stiff paste in a clean mixing container. For deep cracks or holes the mix can be thickened.

#### Application

Apply the mixed filler using a trowel or filling knife and press firmly into the cavity. Smooth off slightly proud of the surface and allow to dry thoroughly. Rub down with sandpaper to achieve a smooth finish. The filler will dry to a white finish and can be overpainted or papered without priming.



#### Drying Times

Dependant on ambient temperature, substrate and thickness of fill.

#### Size

Available in 450g and 1.5Kg cardboard boxes.

#### Colour

White powder.

#### Shelf Life

Indefinite if kept dry in original packaging.

#### Storage Conditions

Store in cool, dry conditions in original sealed container between +10 and +20°C. Keep away from direct sunlight and protect from frost.

#### Disposal Of Containers

Do not leave empty containers where residue could be harmful to children, animals or the environment. Replace lids and remove any containers or used material to a central disposal point in accordance with local regulations.

## Health & Safety

Please refer to separate safety data sheet (SDS) for full handling, use and storage instructions. Keep out of reach of children. It is the user's responsibility to determine suitability for use. If in doubt, contact our Technical Department for advice.

**Note: this information is for general guidance only, since site conditions and labour are beyond our control.**

## Specification Summary

Appearance	Fine white powder
Odour	Plaster of Paris
Flash Point	Not applicable
VOC Content	None
pH (Test method: 280g powder: 120g water)	6.5-7.8
Bulk Density	0.6-1.2g/cm <sup>3</sup>
Commodity Code	3214101000

## Product / Order Details

Code	Colour	Fill	Barcode	UFI
BDPF4	White	450g	5056437400635	-
BDPF1	White	1.5Kg	5056437400642	-



## Part of the Bond It Decorating Sundries Range

**Head Office:** Unit H4, Premier Way, Lowfields Business Park, Elland, West Yorkshire. HX5 9HF.  
**Telephone:** +44 (0)1422 315300 **Email:** salesuk@bonditgroup.com  
**EU Office:** SISL (Bond It) Ireland Limited, 70 Sir John Rogerson's Quay, Dublin 2. **Tel:** +353 1 960 9411  
**Website:** www.bonditgroup.com

**Note:** The data presented in this leaflet is in accordance with the present state of our knowledge, but does not absolve the user from carefully checking all supplies immediately on receipt. We reserve the right to alter product constants within the scope of technical progress or new developments. The recommendations made in this leaflet should be checked by preliminary trials because of conditions during processing over which we have no control, especially where other companies raw materials are also being used. The recommendations do not absolve the user from the obligation of investigating the possibility of infringement of third parties rights and, if necessary clarifying the position. Recommendations for use do not constitute a warranty, either expressed or implied, of the fitness or suitability of the products for a particular purpose.



**Version 5: Updated 09/09/24**  
Supersedes: V4 15/02/21

**bond it**

An **ASTRAL** Limited Company

